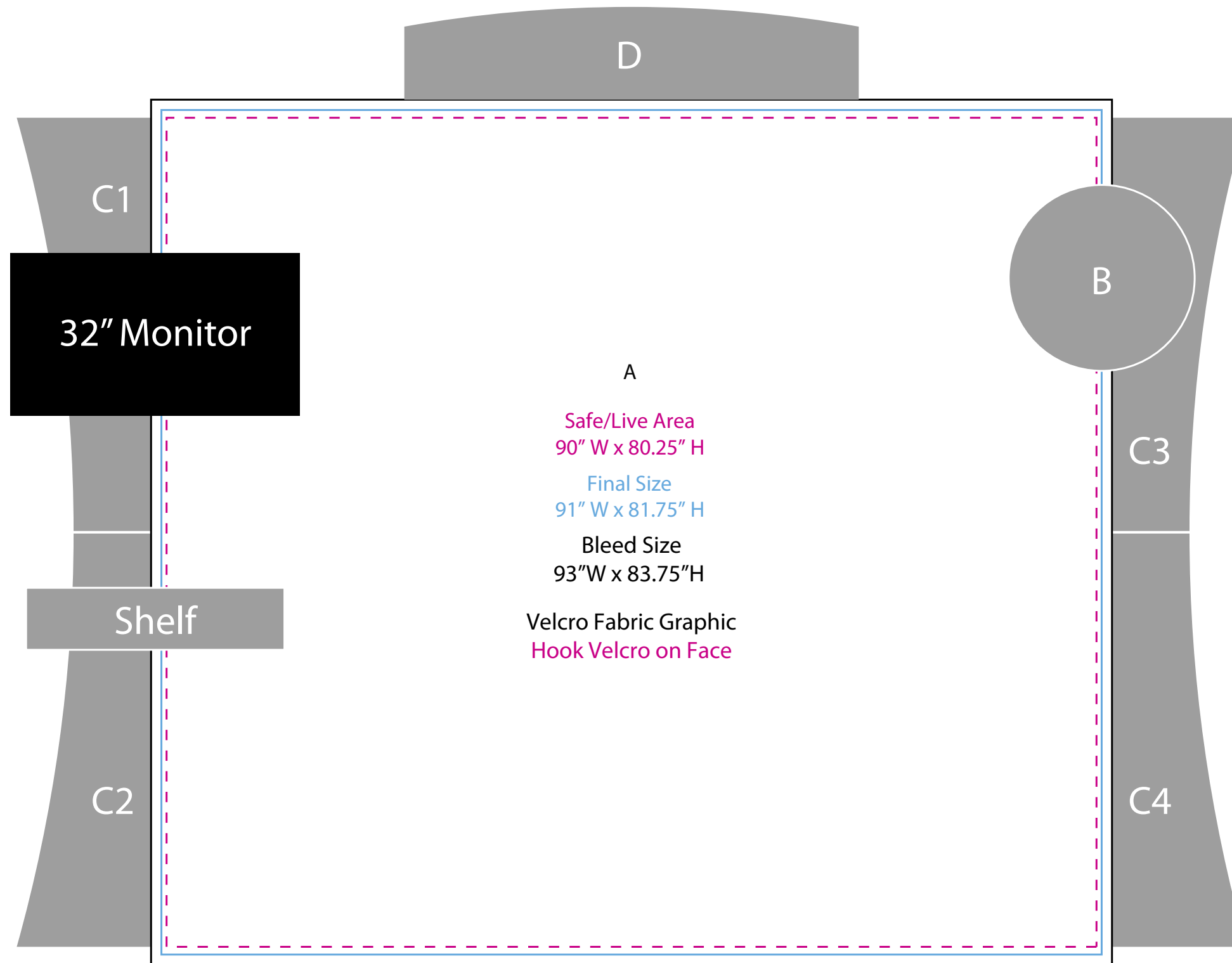
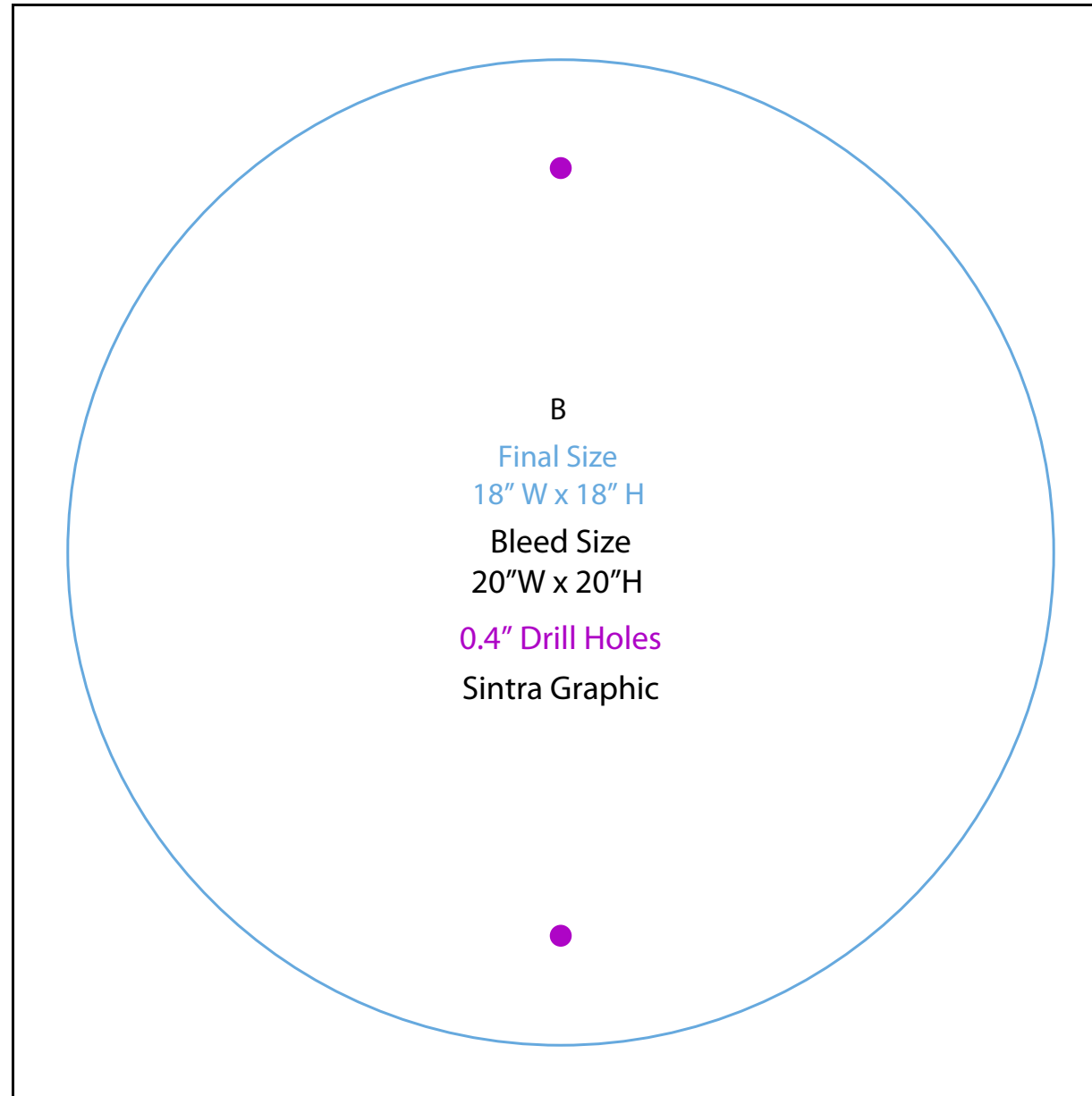


# Graphic Template Backwall



NOTE: All Raster Art (jpg, tiff,psd, png, etc.) must be at least 100 dpi at print size.  
Standard kits are often customized. Please check with Customer Service to ensure that this template matches your specific job.

# Graphic Template Standoff



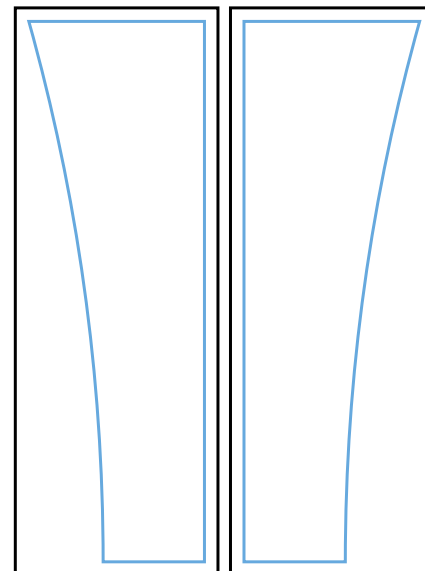
NOTE: All Raster Art (jpg, tiff,psd, png, etc.) must be at least 100 dpi at print size.  
Standard kits are often customized. Please check with Customer Service to ensure that this template matches your specific job.

Graphic Template  
Wings

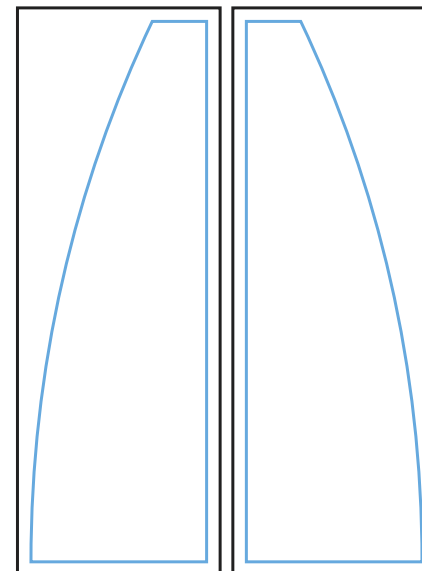
Graphics NOT included in base price. Please request pricing



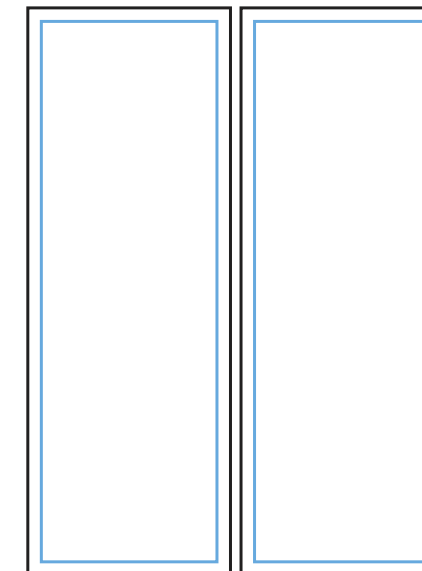
Option 1



Option 2



Option 3

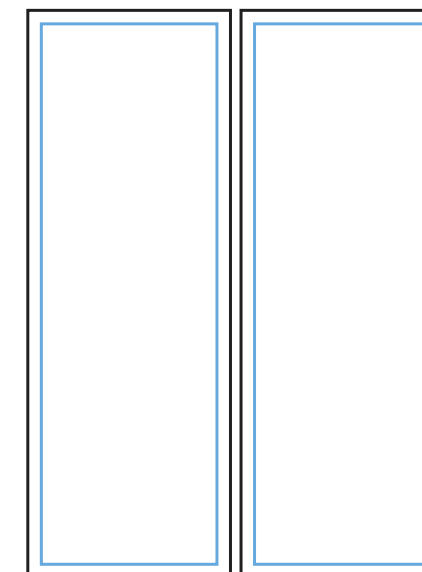
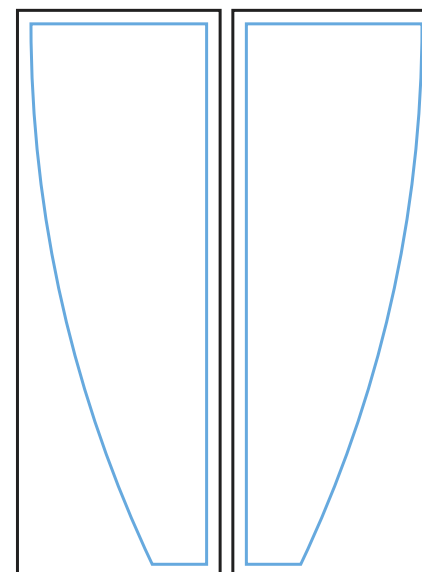
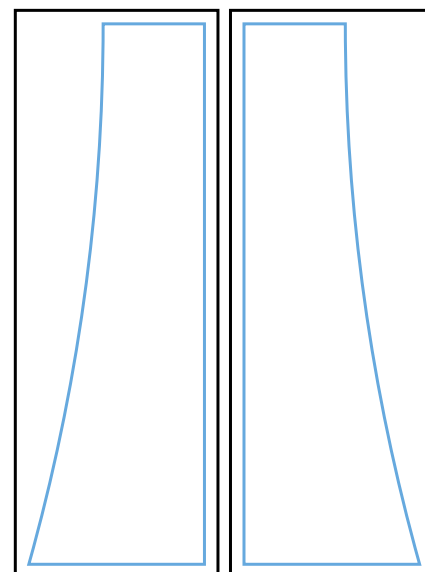


C1, C2,C3,C4

Final Size  
13" W x 40" H

Bleed Size  
15"W x 42"H

Sintra Graphic

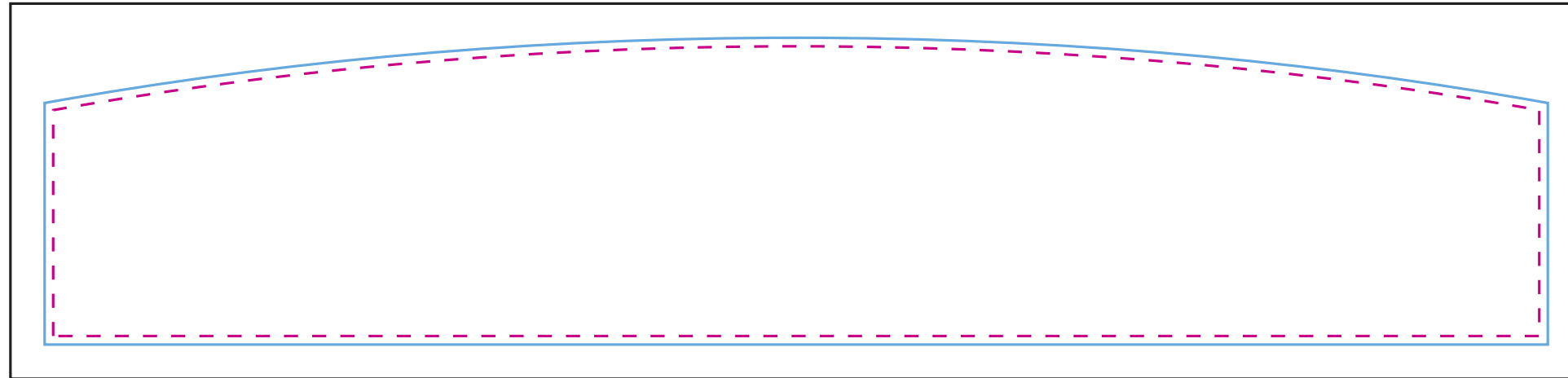


NOTE: All Raster Art (jpg, tiff,psd, png, etc.) must be at least 100 dpi at print size.  
Standard kits are often customized. Please check with Customer Service to ensure that this template matches your specific job.

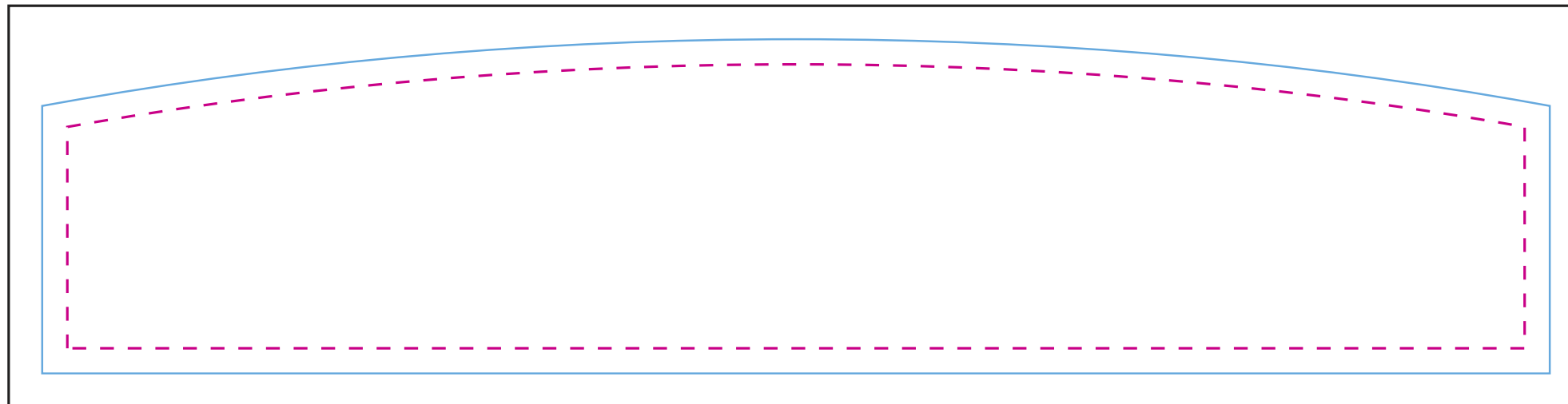
# Graphic Template Header



D  
Option 1  
Live Area  
43.48" W x 8.48" H  
Final Size  
43.98" W x 8.98" H  
Bleed Size  
45.98"W x 10.98"H  
Sintra Graphic



D  
Option 2  
Live Area  
43.48" W x 8.48" H  
Final Size  
44.98" W x 9.98" H  
Bleed Size  
46.98"W x 11.98"H  
Velcro Fabric Graphic



NOTE: All Raster Art (jpg, tiff,psd, png, etc.) must be at least 100 dpi at print size.  
Standard kits are often customized. Please check with Customer Service to ensure that this template matches your specific job.